



# Orchid Society of Western Pennsylvania

February  
2022

[www.oswp.org](http://www.oswp.org)

## Upcoming Events

February 20, 2022  
Kristen from New World orchids  
“Honey I Shrunk the Orchids”.

## Looking Ahead

**Meetings will continue on Zoom for now**

March 19 & 20 2022 OSWP Spring show  
“The Joy of Orchids”  
April 2022 TBA

### **" UNDER NORMAL CIRCUMSTANCES "**

OSWP meetings are held at the Phipps Garden Center on Shady Avenue and are open to members, their guests and the general public.  
Program Calendar is also available at [www.oswp.org](http://www.oswp.org)

HOWEVER, we are on Zoom for meetings , and those interested non members could use the 'contact us ' section of the website to get a Zoom invitation

#### **OSWP Officers**

**Co-President:** Sheila Nathanson and Mike Lyse

**Co-First Vice President:** Kathleen Arria and David Springer

**Second Vice President:** Timothy Choltco

**Directors:** Brooke Decker, Peg Kalupanov, Jinghua Ou, Aaron Vitron, Tamara Wurst.

**Secretary:** open

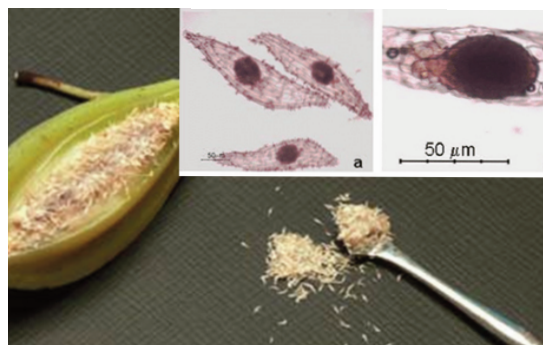
**Treasurer:** Janet Greenberg

### **What's Blooming Now**

Growing orchids from seed is a challenge that even the hobbyist can master. If you wondered why orchids are so expensive. It takes three to fifteen years to grow orchids to blooming size from seed.

As you can see (from the photo here) the seed is very small and needs special care to germinate and grow. There is no mystery today on the method used to do this, but it has been many years of research to determine how to be successful in growing orchids from seed. Originally the growers would scatter the seeds on the roots of mature orchid plants in the hopes of getting some to grow. In the February-March 2022 issue of Orchid Digest is an article describing the complete method to grow orchids from seed. The article includes equipment needed, method to use and where to obtain the necessary materials to grow your favorite orchid. The seed is planted in sterile media so there must be a glove box, so a sterile environment can be maintained while sowing the seed. In the Orchid Digest article, there are drawings for the glove box that you can build. You will, as well, need a pressure cooker to sterilize the growing media. If you wish to try your hand at growing orchids from seed, get hold of the February-March 2022 Orchid Digest which will help you to be successful.

### **Orchids From Seed**



## **Co-President's Letter December 2021**

For those who were unable to attend our Zoom meeting on Sunday, I would like to once again congratulate our OSWP members, Hossein Noorbakhsh and the growers at Phipps Conservatory for being awarded Certificates of Cultural Excellence, or CCE, for plants they exhibited at the Great Lakes Judging Center on Saturday, January 15. This is an AOS award which recognizes the grower of an exceptionally well grown and flowered plant. We are very pleased that they were honored in this way, Awards are not the only reason to strive to grow as well as you can, but it sure is nice to get a bit of recognition for a job well done.

Next month is SHOW TIME. The online sign up sheet, Time to Sign Up, is available at [ttsu.me/oswp2022](https://ttsu.me/oswp2022). Please take a look, and sign up for whichever jobs you prefer. Remember, "Many hands make light work " certainly applies here. I hope to see most of our members in March!

We are working on our sponsored program book again - if you frequent a business, please consider asking if they would consider buying an ad in our program. This was a very successful fundraiser in 2020. For as little as \$15. you can be included in the 2022 show program. For information regarding sponsorships, contact Janet Greenberg, [janetg150@verizon.net](mailto:janetg150@verizon.net) or Sheila Nathanson, [msnsan@gmail.com](mailto:msnsan@gmail.com). Our February meeting will be 2/20/2022. We are not sure if we will be in person, but the Zoom option will certainly be available. Our speaker will be the proprietor of New World Orchids, Dr. Kristen Uthus. Bring your miniature questions!

You may have received our Spring Show poster in your email inbox. Since we usually distribute posters to members during meetings, we are a little behind on distribution. If you can, please make some copies of the poster and place them on bulletin boards wherever you can. Local shops often have community bulletin boards, some merchants will place posters in their windows. Our very colorful and attractive poster would make a nice addition.

Be well and think 2022 Orchid Show,  
Sheila Nathanson and Mike Lysy

## **Mini-class 2022 – February 2022**

About 1:15pm prior to the Business Meeting time

Growing Orchids Under LED Lights: Natalie Turicik.

This month's mini-class will be growing orchids under LED lights. Natalie has done an absolutely fantastic job growing her orchids on windowsills and under LED lights. While LED lights have been around for some time, there are still a lot of unanswered questions. There are many types of LED lights available now. They range in size from a single plant light to enormous lights fixtures that will cover a 6' x 6' area. As electricity costs increase many growers are moving to LED fixtures. While LED fixtures are often more expensive than other type fixtures, in some cases the energy savings pays for the added cost.

Please join me, Natalie, and the rest of the OSWP for this informative mini-class.

Timothy Choltco

2nd Vice President and all around decent sentient being.

## Orchid Gems

### **The Beauty of Orchids, Art, and Friendship: Leslie Kaplan**

By Norma Raiff

So how many of us participate in OSWP to learn more about growing orchids? Are we perhaps looking for special friends who we can bond with because of a mutually-held orchid addiction? Or are we generally motivated by a broader connectedness to nature and beauty? My own experience suggests that the correct answer may be (d) “all of the above.” Witness, Leslie Kaplan.

I recently met Leslie at our last two “real time” meetings, when she was accompanied by long term OSWP member, Joan Markert. (As a reminder, Joan is the well-known costume designer we spotlighted in last month’s Gems.) I was curious to learn more about Leslie, because since the Covid pandemic our chance of getting to know other members has been distressingly limited. And just what was the connection between Leslie and Joan?

Leslie Kaplan grew up in Columbus Ohio and moved here from North Carolina where she working as a City Planner after earning a Master of Regional Planning from UNC. Leslie met her husband Peter, also a planner, at a historic preservation conference. They moved to Pittsburgh when Peter accepted a job with PNC bank, and ultimately raised their two children, Katie and Jeff, here.

One of the earliest things we talked about was her home. Located in Point Breeze near the Frick, her 1870 farmhouse was moved off Penn Avenue in 1893 to make way for an industrialist’s new stone mansion. Leslie and Peter have restored the house’s Italianate Victorian character and planted a collector’s garden around it!

Leslie is an artist and a gardener, a teacher and an entrepreneur. She owns Rush Creek Designs where her efforts are divided between being a glass flameworker and a garden designer: “two distinct disciplines that are surprisingly complementary.”

Leslie’s handmade jewelry is contemporary, bold, colorful, with high attention to aesthetic appeal. The glass bead components are created by “flameworking”, a technical term that dates back to an activity performed by Venetian glassmakers in Renaissance Italy who used the heat of oil lamps to form and mold their medium. Modern flameworkers are craftsman who directly melt and manipulate glass in a propane/oxygen torch’s flame.

Leslie has been a flameworker for about 20 years and works out of her home studio. She’s well established professionally and is a member of the Craftsmen’s Guild of Pittsburgh as well as being recognized as a Master Artisan of the Pennsylvania Guild of Craftsmen. In her own words, her effort strives to reflect nature’s beauty. “Many of my pieces are reminiscent of flowers, reflecting my deep knowledge and appreciation of the botanical world.” See for yourself by visiting <https://www.rushcreekglass.com/>

Leslie is also a Master Gardener and a designer specializing in residential gardens. She enjoys collecting and





continued from page 3

using unusual and rare plants like Albizia ‘Summer Chocolate’ and double Hellebores. At the time of writing this piece, Leslie, who is also a Phipps’ instructor, was teaching a four-week course, Gardening for Four Seasons of Interest. It’s a component of Phipps’s Sustainable Horticulture and Landscape & Garden Design Certificate program.

Leslie joined OSWP in 2020, at our last show. “I kept coming to the shows and buying orchids here and there – I finally decided it was time to join and figure out what I was doing - I’ve really enjoyed the zoom meetings, and I’ve learned so much from all of you!”

Right now, Leslie’s collection is up to about 45 orchids. Her acquisitions are eclectic and purchased from various sources ranging from established orchid vendors, such as Sunset Valley Orchids, to Florida ‘Home Depots’. “Right now, I’m interested in orchids with interestingly-shaped pseudobulbs such lycastes and catasetum, and winter-bloomers.” Leslie’s plants are grown under lights and in windowsill culture, moving outside under a shade cloth in the summer.

And about that friendship with Joan Markert. Joan and Leslie are longtime friends and members of Sixth Presbyterian Church in Squirrel Hill where they sing in the choir together. As for their shared orchid hobby and co-OSWP membership: “I really admire her orchid setup, and it’s really helpful to have a friend to come to with questions. She seems to know everyone, and going to meetings and events with her is great fun, and we encourage each other to participate!”

Leslie’s final words of orchid-related advice. “You should take some chances with plants that speak to your heart, but if a plant doesn’t thrive, oh well, I’ve learned that maybe it’s time to throw it out and try something else.”



## Specker for the February 2022 meeting Dr. Kristen Uthus

Our speaker for our February meeting will be Dr. Kristen Uthus. Kristen will be ZOOMing in to introduce us to miniature orchids with a talk entitled "Honey I Shrunk the Orchids".

Kristen is the owner of New World Orchids which specializes in miniature orchids, particularly species, from around the world. They also have one of the widest selections of *Neofinetia falcata* (a.k.a. Samurai Orchids) and other Japanese orchids in the US.

Kristen studied both plant and animal ecology and evolution at Virginia Commonwealth University (VCU) and the Ohio State University (OSU). She then taught biology and ecology at several colleges including VCU, OSU, University of Michigan, and Eastern Michigan University. Kristen a sought-after speaker and travels to orchid societies all over the country to talk about orchids and appears at shows in the Midwest and on the East Coast throughout the year. Definitely a meeting not to be missed!



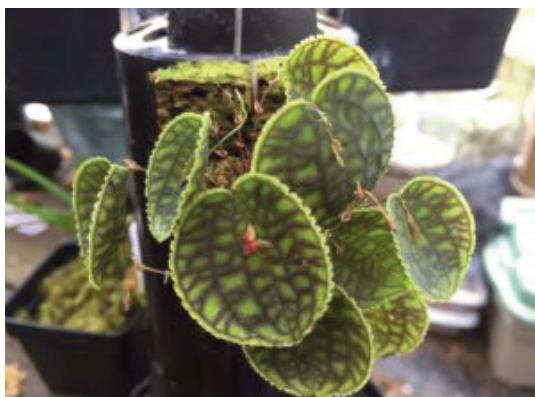
Dr. Kristen is on the left.  
with her family



*Chiloschista viridiflava*



*Bulbophyllum lilacinum*,



*Lepanthes calodictyon x tentaculata*  
photos from New World Orchids web site.



*Cymbidium goeringii* Long Zi 龍字



## P-OSI

A joint initiative between Phipps Conservatory and the Orchid Society of Western Pennsylvania to create and cultivate an orchid collection of note for enjoyment, education and research.

### **February 2022**

Lots of wonderful news from Phipps!

On Saturday, January 15th at the AOS judging in Ann Arbor, Michigan, Phipps plant, *Paphiopedilum gratrixianum* 'Phipps Best' was awarded a CCE/AOS of 91 points. That is a wonderful tribute to everyone who has helped grow the Phipps' orchid collection, in particular, the Barbara Tisherman Slipper Orchid Collection: Georgia Wahl, who laid the foundation with a lower point CCM several years ago; Katie Schuller, who further developed the orchid culture; and, in this last year, Gary Worthington, who grew the orchid collection beautifully. And, of course, a pat on the back to P-OSI and Pfun: the Phipps administration and the OSWP, who have always worked together to grow the collection in so many ways. Great teamwork! It's an outstanding award. Congratulations, all!

More wonderful news!

As Gary moves on to a new facet of his horticultural career, Giovanni Giraldo, an orchidist from Colombia who received a Ph.D. in Botany from the University of Wisconsin-Madison, has been hired as Phipps Orchid Horticulturist. We welcome him to Pittsburgh and to Phipps and look forward to meeting him and working together with him, Ben and the entire Phipps team to grow the orchid collection into one of national and international note.

Speaking of working together, we hope to be able to get back to helping at Phipps in the near future, once Giovanni has time to "get his feet wet."

Don't forget, the Phipps Orchid and Bonsai Show is now open. Timed tickets are available online.

Stay war

Best Wishes for 2022!

Nancy Kline  
nancyk412@gmail.com  
412-367-1556

Demetria Marsh  
demetria117@gmail.com  
412-848-4349

### **Current Committees Chairs,**

AOS	Nancy Kline
Culture Corner	Nancy Kline
Facebook	Lance Cheuvront
Garden Club/Library Liaison	Karen Gibson
Hospitality	Carolyn Bolton
Library	<b>open</b>
Membership	Kathy Collins
Mini-class	Tim Choltc
Newsletter	Jim Yamber

Orchid Gems	Norma Raiff, Pam Horter-Moore, Cristina Eyler
Pfun	Nancy Kline
P-OSI	Demetria Marsh
Raffle	Natalie Turicik
Show	Sheila Nathanson, Norma Raiff and Janet Greenberg
Speaker	Kathleen Arria and David Springer
Website	Jinghua Ou



## **2022 OSWP Annual Spring Orchid Show- “Joy of Orchids”**

It is hard to believe that we are at this time again- the Show is right around the corner! Specifically March 17 through March 20. Please clear your schedules to be free at that time to get involved. There are jobs for everyone and you could do a different job every day if you choose. You could help with set up on Thursday after 4pm, help create the Society Exhibit (or your own exhibit) on Friday, clerk with the judges on Saturday morning then jump to the repotting area in the afternoon. Sunday you could greet visitors, or urge interested visitors to join the society. Then help with breakdown. The point is: we need many hands to create a beautiful show. Your help will be much appreciated by all.

In the next couple of days I hope to have the online signup tool, Time To Sign Up, running like a top. To access, go to : [timetosignup.com](http://timetosignup.com), then enter our event name : OSWPspringshow. You will be able to see all the categories of available volunteer opportunities, and sign up in the time slot that works for you.

This endeavor truly takes a village, and I look forward to working with fellow villagers to make our 2022 a great success.

### **2022 Show Schedule**

Thursday, 3/17- 4pm - ? Major Set Up

Friday , 3/18- 8am to ? Exhibit Building, Vendor Unloading, Detail Set Up, Registration

Saturday, 3/19- 8am-8pm. Judging, Clerking, All Show Activities

Sunday 3/20- 9am-4pm. All Show Activities, Breakdown at 4pm

Sheila Nathanson, Janet Greenberg, Norma Raiff, Show Chairs

## **Hospitality**

An army moves on its stomach and our orchid show army is the same. We love our food. We never go without good food for our show. I am looking for food for the following days.

Friday has breakfast, lunch, and dinner.

Saturday breakfast and lunch and snacks

Sunday breakfast and lunch

We cannot cook anything there. We need food to be used without refrigeration other than a cooler. Crock pots are great for hot food.

We cannot clean anything after use so if possible bring food in throwaway containers.

Think about what you can bring and email me. I am in the OSWP membership booklet.

Thanks from your calm caring food ogre, Mike Lysy.

Sent from my Galaxy

## **OSWP Society Sales Table 2022 Show**

Once again we will be selling items at the Society Sales Table. In order to make this run smoothly, there will be a few guidelines for those who are hoping to sell their items. As we had a year off and this is a newer venue, please bear with us to make our table the revenue producing area that it has been. There may be last minute changes, please stay tuned... Make sure items are properly priced and marked with your name or initials. I would suggest 2 stickers as they tend to fall off. If you have the time, a list of your sale items would be great for us to have. Also, if your initials are fairly common, please let us know your name so we can get the proceeds to the proper person.

- Obviously, plants are to be disease and bug-free. Anything we find to be suspect will be isolated and returned. The better your plants look, the more likely they are to sell. If they are not currently blooming, a photo of the plant is always a help. Any specific information that would be helpful can be added to a tag on the plant. People might like to know where you purchased it and any helpful cultural information.
  - We are encouraging the sale of orchid items. These are things like: art- work, books, clothing, decorative items, fancy pots and whatever else you can find that has something to do with orchids. No non-orchid plants or other items, please. Again, price them with 2 stickers and don't forget your name.
  - We are taking a 20% commission for OSWP. Please price your items accordingly.
  - Items can be dropped off any time on Friday, Saturday or even Sunday. Obviously, the longer your plant is available on the sales table, the more opportunity it has to be sold. You MUST plan to retrieve your items by 4pm on Sunday. If you want to know if you have items to take home, call me at 412-367-1556. I will be at the show site and can find that info for you. It is your responsibility to get your items home.
  - We can use bags and boxes. Both plastic and paper bags are great. Small boxes help our buyers get the plants home safely.
  - There will be NO 'holds' of sale plants before they are purchased. You may pay for the plants, have them packaged and leave them with us.
  - This includes plants that are seen before the table is officially open. If you want something desperately, find me and pay for the plant. I will deal with the paperwork later.
- Again, NO HOLDING of any items.
- A record of sales will be submitted to Janet Greenberg, Treasurer, within a few days of the end of the show. Your check will come from the OSWP treasury.
  - Some help will be needed on both Saturday and Sunday. Please contact me if you are interested in working with our sale items. It will be in your interest to work at this table if you have plants for sale. No one can describe your plants better than you. We particularly need help on Saturday morning, 9 am to noon. The vendor area will be open and many of our members are involved with judging so we need anyone who is not judging to help with sales.

With your help we can make this a profitable endeavor for members and the society alike. Nancy Kline: nancyk412@gmail.com 412-367-1556



## Judges Viewpoint by Dave Miller, Great Lakes Judging Center

Issue #12

### Presentation, Presentation, Presentation

Sure, you have babied your prize orchids and now they are coming into bloom just in time for exhibiting at the show. Let's talk about how to maximize your ribbon count by putting a little effort into putting each of your plants into their Sunday best outfits.

### Pretend You are the Audience

Yay, it's show season finally, what should you be thinking about your orchids? The simple view of how to display your orchids is to pretend you are the Viewer. There will be hundreds of visitors passing the exhibit area after judging is over. Some of them even are looking for a quick photo op of YOUR great flowers. Make it easy on them by presenting your flower directly at their eyes.



With multi-floral orchids, sometimes that is a very tough thing to do. It may take the better part of a half hour to get the arrangement just right. And whatever you do, don't leave your

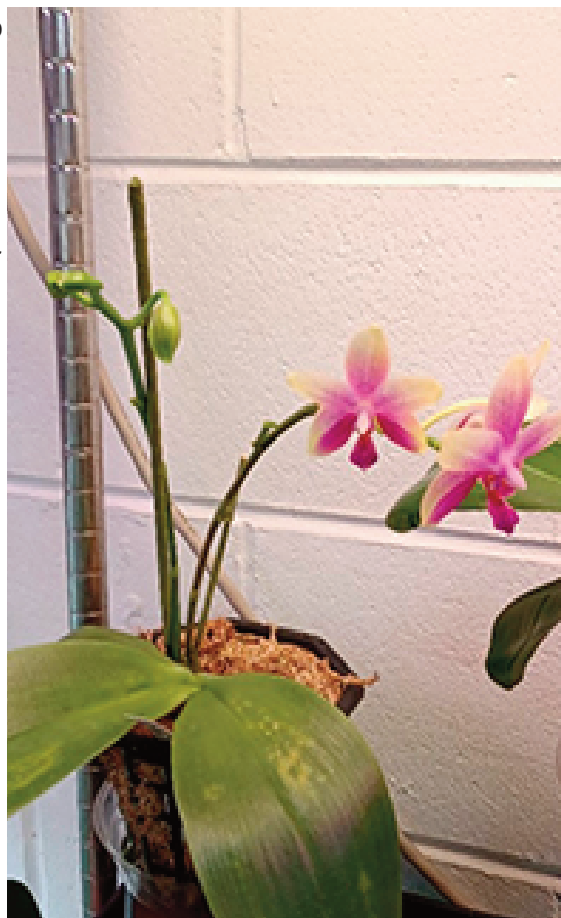
arrangement up to the exhibit builder.

They are extremely busy but keep in mind they dozens of plants to arrange so your plant will only get a fraction of attention that you would give.

Many times, I will start primping my plants as soon as they start to spike. Yessiree, it could be three months

or more before the flowers open. Phals and slippers for sure. As soon as the spike is 2" tall, I put a stake in the plant to notify me there is one and secondly to keep my bumbling hands away from the tender tip. On the right is a Phal with two spikes and I already enforced a separation in the spikes as I can see there will be interference when the flowers open.

One note about this. I use simple bamboo skewers at first but if I know the spike is long for an Oncidium or Phragmipedium, I would likely start with a larger stake. Floral stakes from the craft store are sturdy and affordable and bamboo plant stakes are the strongest wooden product.



## The Process

As the flower spike develops, it can be carefully manipulated into a pleasant form. I repeat CAREFULLY. The process of training spikes takes time. Move it a little, stake it there, come back in four to seven days and move it again. Sometimes only once in a while is enough as long as you have left time before the anticipated showing. So, on the right, is what happens if you push/pull on the spike too much. Sad to say it's not the first Phal spike I have broken while getting ready for a show.

## Early Staking

Visualize what your flower spike will look like as it starts to develop. Next, examine the tendency of the spike or more importantly, the spikes to see if you think they will be crowded and if so, then early is the time to get them spaced apart. In the first picture below, it is visually obvious the two spikes are colliding even though they are both nicely arched. The watch-words here are we want to see every flower with no crowding. Simple, use an upright



stake on each one to pry the spikes apart to give all flowers a little breathing room. In the right photo, the flowers have started to open and there is plenty of room with no crowding, yet all the flowers are oriented up because I started early. To restate, it's important to do this early before the buds have differentiated which means they have already decided which way is up. Doing this too late will give you flowers that twist in all directions. Not good. I will put this plant back on the bench in EXACTLY the same spot and orientation as it



came to keep the emerging flowers the same. Just before the show, I will decide whether stakes are still required and if so, I will trim them, wrap them, and fix the spike to them.

These two slippers on the left have been prepped for show with their faces directed at the viewer and their stakes upright and wrapped to blend in with the spike. On the right is a large Bulbophyllum with thirteen spikes and some of them were crawling over the others. Before the flowers opened I staked some of the spikes away from others to make sure none were touching and to try to have spikes visually all around the plant. After two weeks most of them stayed with no staking.





On the right is the fabulous Paphiopedilum out of the Barbara Tisherman Slipper Orchid Collection that just recently received an AOS CCE award for cultural excellence. Note how the spikes are arranged all around the plant. This is critical to receive the highest



possible award the plant can garner in its current form. What you don't see are the eight stakes attached but hidden to make those spikes "appear" all the way around the plant.

Again I say, please don't force this job on the exhibit builder, it just isn't fair to them. In addition, there is only so much time, so if you want better ribbons, then YOU need to put in the time to groom your own plant before you drop it off for exhibiting. True for shows, true for AOS judging, and also very true for the Show Table.

### Housekeeping

Cleaning your plant is just as important than the rest. Take for example the cute purple Phal with two spikes. It has a fading leaf, the oldest one, which is normal. Before showing this plant, the leaf will either fall off or I will remove it. It's wrinkly and unsightly.

Finally, the most sacrilege of all. If you have a plant with multiple flowers or spikes but one is damaged or fading/wilting. CUT IT OFF. Two flowers are better but one good and one bad flower will depreciate the visual effect of the good flower and a viewer's eye will go directly to the bad stuff



first. Believe me, it is heartbreaking to cut off a fading flower or spike on the way to AOS judging. Sorry, it must go, and that is also true for entire spikes if the flowers are past prime. Take a look at this Howeara and how unsightly the faded spikes highlight the plant instead of the good flowers.



Go get 'em now and follow these simple guidelines for prepping your plants for the show. Happy Orchiding Contact Dave at [dcmjpasmil@aol.com](mailto:dcmjpasmil@aol.com) or 330-307-7189



First Class Mail

Orchid Society of  
Western Pennsylvania  
James Yamber (editor)  
380 Western Ave.  
Oakdale, Pa. 15071

quail1@verizon.net

The Orchid Society of Western  
Pennsylvania Inc. is a non-profit  
corporation organized to advance  
the propagation, horticulture and  
preservation of orchid species and  
hybrids through research, education  
and scientific endeavors

Materials under copyright  
use or reprint by permission.

**Upcoming 2022 speaker**

Kristen from New World orchids  
“Honey I Shrunk the  
Orchids”.

More to come for the future programs for 2022

